

What is a Mining and Rehabilitation Demonstration Pit?

The Mining and Rehabilitation Demonstration Pit (MRDP) is a reduced-scale trial designed to test how land can be effectively rehabilitated under real world conditions. It forms part of GCM's reporting and delivery obligations under retention licence RL2026, which requires us to undertake large-scale rehabilitation trials.

Trial pit size



170 metres long

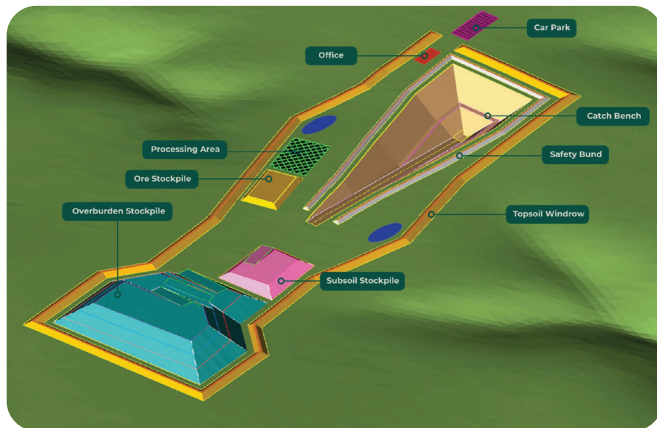
(about the length of the MCG playing field)

55 metres wide

(about the length of one Olympic swimming pool)

Up to 22 metres deep

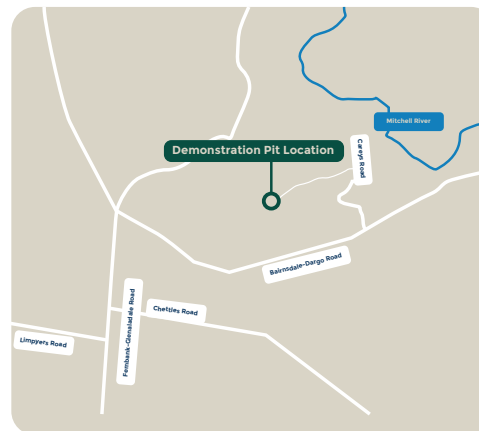
(Seven storeys deep)



Location



The MRDP is located on the eastern side of the Fingerboards Project Area. This site was chosen because its geology and soil conditions closely match those expected across the wider project area and has limited impact on native vegetation.



What will we test and trial with the MRDP:

- Geological information such as soil permeability, water retention, density and moisture content.
- Tailings design parameters including consolidation, permeability, strength and water recovery.
- Groundwater quality and monitoring of long-term seepage.
- Soil characteristics including soil strength, bearing capacity, and soil chemistry.
- Soil improvement methods to support strong revegetation outcomes.
- Species selection and rehabilitation practices to optimise vegetation growth.
- Monitoring of environmental parameters including air quality, noise, and water quality that can input into the modelling for the full-scale project.
- Background radiation levels to identify any changes before, during and after earthworks.

Construction of the MRDP

Indicative Timeline

Earthworks Limited to daylight hours (7am-6pm Mon-Fri, 7am-1pm Sat).



Environmental protections

Biosecurity: Clean-down stations for machinery, restricted access zones and coordination with neighbouring farms.

Dust and air quality: Use of a water cart, hydro-mulch, and progressive backfilling. Where necessary, we will pause works during high wind conditions.

Ecology and vegetation: Works occur in cleared pasture, with ecological checks completed prior to any excavation.

Land use and farming productivity: Soil profiling, controlled stripping, subsoil trials, soil amelioration and pasture reestablishment with ongoing monitoring.

Water (surface & groundwater): Fully bunded work area with underdrainage to collect water, monitoring bores, and groundwater located well below the pit depth.

Wildlife & livestock safety: Fencing and controlled access to the site.

Noise: Daytime-only operations, no processing on weekends, and noise monitoring.

Cultural heritage: Works proceed only in accordance with conditions of CHMP approved by GlaWAC.

Jobs and procurement

 **\$1 million**
In procurement contracts

We are prioritising East Gippsland people and businesses wherever possible. The MRDP includes more than \$1 million in procurement contracts, supporting local jobs, suppliers and contractors across construction, civil works and site operations.

This work will help refine our broader local jobs and procurement plan, ensuring the benefits of the Fingerboards Project flow to East Gippslanders first.

If you're interested in opportunities for the MRDP or the Fingerboards Project, visit www.gippslandcriticalminerals.com/jobs-suppliers.

Want to know more

We'll be offering opportunities for community members to visit the site, see the works firsthand, and share their feedback.

Our East Gippsland Community and Stakeholder Lead, Mick Harrington, is available if you'd like to get in touch: Mharrington@gippslandcriticalminerals.com

You can also scan the QR code to register for updates



For more information, visit www.gippslandcriticalminerals.com

Gippsland 
Critical Minerals