



MINING & REHABILITATION DEMONSTRATION PIT

Supplementary Community Engagement Plan

Addendum to Gippsland Critical Minerals'
Community Engagement Plan

November 2025

Disclaimer

This Supplementary Community Engagement Plan (SCEP) may only be used for the purpose for which it was commissioned and for the sole benefit of the Department of Energy, Environment and Climate Action (DEECA).

The opinions, conclusions and any recommendations in this SCEP may be based on conditions, risks, uncertainties and contingent factors encountered or third-party information reviewed but unverified at the date of its preparation. GCM expressly disclaims responsibility or obligation to update this SCEP to account for events or changes occurring subsequent to the date that the plan was prepared.

While every reasonable effort has been made to ensure that this document is correct at the time of its preparation and submission, Gippsland Critical Minerals, its agents and employees, disclaim any and all liability to any person in respect of anything or the consequences of anything done or omitted to be done in reliance or upon the whole of any part of this document.

This document should not be distributed or disclosed or published without the prior written consent of Gippsland Critical Minerals.

Version Control and Approval

Version #	Prepared	Reviewed	Approved	Date	Description	Next Revision
0.5	Ryan Leslie	Mick Harrington	Ryan Leslie	24 Nov 25	Final	
0.4	Ryan Leslie	Loretta Fallaw	Draft	14 Nov 25		
0.3	Ryan Leslie	Loretta Fallaw	Draft	31 Oct 25		
0.2	Murray Holland	Ryan Leslie	Draft	11 Aug 25	Final	
0.1	Ryan Leslie	Murray Holland	Draft	30 May 25	Final	

Contents

Acknowledgement of Country	3
Introduction.....	4
MRDP Work Scope	4
Regulatory Requirements.....	5
Engagement Goals.....	5
Key Stakeholders.....	6
Communication Tools & Channels	7
Broad Key Messages.....	8
Evaluation & Feedback.....	8
Engagement Approach per Key Stakeholder Group.....	9
Impacts, Mitigations, Key Messages & Actions.....	10
Additional Information & Resources.....	12

Acknowledgement of Country

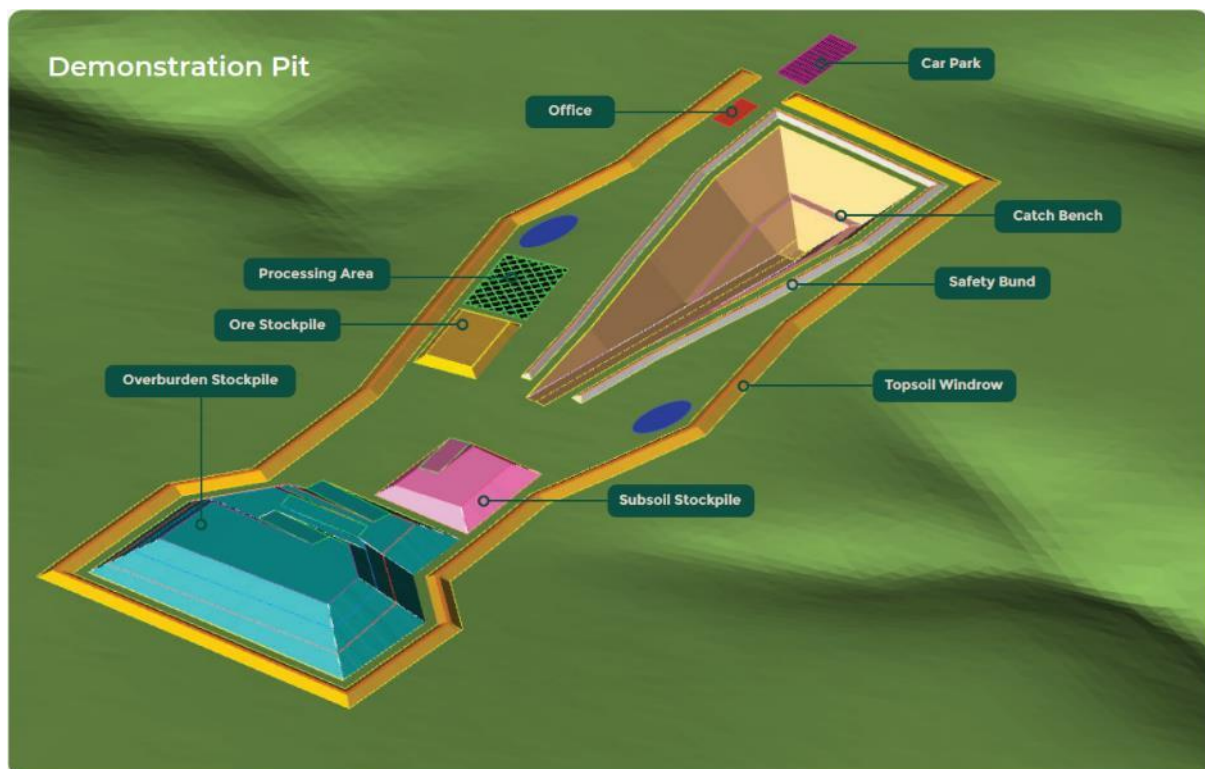
We acknowledge the Gunaikurnai People as the Traditional Custodians of Country that encompasses the proposed Fingerboards Project area. We pay our respects to their Elders past and present and recognise their enduring connection to the land, waters, culture, and community.

Introduction

This Supplementary Community Engagement Plan (SCEP) sets out Gippsland Critical Minerals' engagement approach, key activities and messages for the proposed Mining and Rehabilitation Demonstration Pit (MRDP). It outlines how GCM will inform, consult and collaborate with stakeholders throughout planning, delivery and evaluation—ensuring community values, concerns and priorities shape the trial and its outcomes. This document is supplementary to GCM's broader Community Engagement Plan (CEP).

MRDP Work Scope

The proposed exploration works involve a small-scale bulk excavation trial designed to simulate key elements of the Fingerboards Project, including ore recovery, wet backfilling, and site rehabilitation. Activities will include clearing and stripping of topsoil, excavation of overburden and ore, on-site ore processing using a modular plant, controlled backfilling with co-disposal materials, and pasture revegetation trials. Environmental and technical monitoring, such as noise, dust, water quality, and soil performance, will support data collection for mine design and feasibility studies. The works will occur during daylight hours over a defined area, with strict safety and access controls in place.



Regulatory Requirements & Best Practice

- Mineral Resources (Sustainable Development) Act 1990 (Vic), Section 39A, Section 40(3)(d)
- Mineral Resources (Sustainable Development) (Mineral Industries) Regulations 2019 (Vic), Section 46
- Community Engagement Guidelines for Mining and Mineral Exploration (Resources Victoria)
- First Nations Engagement: First Peoples State Relations guidance and Gunaikurnai Land and Waters Aboriginal Corporation's (GLaWAC) Pathways to Partnership and Whole of Country Plan

Engagement Goals

- Inform stakeholders about the nature, purpose, and timing of the proposed exploration works.
- Build understanding and trust by explaining how the works relate to the broader Fingerboards Project.
- Address community questions, concerns, and expectations - especially around potential impacts and management measures.
- Support regulatory approvals and demonstrate commitment to responsible environmental and social management.
- Provide clear contact points for enquiries, feedback, and complaints.

Key Stakeholders

Following is a list of key stakeholders most likely to be impacted or have interest or influence on the project scope and objectives. Refer to GCM's broader Community Engagement Plan (CEP) for a more comprehensive list of stakeholders.

Local Landholders and Near Neighbours	Those directly impacted by the works, including landowners and near neighbours, who will have concerns about land access, amenity, compensation, and local impacts.
First Nations	Gunaikurnai Land and Waters Aboriginal Corporation (GLaWAC) and other relevant Aboriginal organisations, with interests in cultural heritage protection, Indigenous employment, and land management.
Local Government	East Gippsland Shire Council and Wellington Shire Council, interested in community wellbeing, economic development, and planning approvals.
State and Federal Government Departments	Resources Victoria (RV), Department of Energy, Environment and Climate Action (DEECA), Environmental Protection Authority (EPA), East Gippsland Catchment Management Authority (EGCMA), West Gippsland Catchment Management Authority (WGCMA), Department of Health (Victoria), WorkSafe Victoria, and the Federal Critical Minerals Office, all overseeing compliance and regulatory approvals.
Community Reference Group (CRG)	A structured group representing various community interests and providing a channel for input and feedback.
Community and Environmental Groups	Such as Mine-Free Glenaladale, Gippsland Environment Group, Friends of the Earth Melbourne, and local Landcare networks, focused on environmental impacts and project transparency.
Suppliers and Contractors	Businesses that may supply services or materials and have an interest in procurement opportunities.
Business and Industry Associations	Including local chambers of commerce and economic development groups, interested in regional economic opportunities and local procurement.
Local Media and General Public	Important for transparency, accurate information sharing, and managing public perception.
Emergency Services	SES and CFA, who need to be informed about project activities and any potential emergency risks.

Communication Tools & Channels

Tool	Purpose
Information Sheet	Overview of the exploration works, including key activities, timing, and contact details.
Direct Mail / Email Updates	Targeted letters or emails to landholders, near neighbours, Traditional Owners, and key agencies.
Community Information Session(s)	Drop-in sessions or briefings (virtual or in-person) to explain the works and address questions.
Project Website / Social Media Updates	Regular updates, FAQs, photos, and contact information.
Media Releases	Proactive messaging to local newspapers and radio to explain the project's purpose and timing.
Guided Tours	Guided tours at key stages of the project.
Site Signage	On-site notices about the works, safety, and contact points.
Video Package	Before, during, and after works package with drone footage.
Feedback & Complaints Process	A structured process to handle complaints and feedback, ensuring responsiveness, transparency, and fairness.

Broad Key Messages

- The bulk excavation is a small-scale demonstration designed to test ore recovery, backfill, and rehabilitation methods to inform the project's definitive feasibility study.
- Works are temporary, carried out during daylight hours (7am-6pm, Mon-Sat), with appropriate environmental and safety measures in place.
- The works are designed to minimise off-site impacts, including dust, noise, vibration, water quality, and biosecurity, with specific mitigation measures in place.
- Data from these works will help refine environmental models and rehabilitation practices to ensure the long-term sustainability of the project.
- Gippsland Critical Minerals (GCM) is committed to transparency, community engagement, and respect for Traditional Owners, local landowners and near neighbours.

Evaluation & Feedback

The following key steps will be undertaken in accordance with the full evaluation methodology outlined in the full Community Engagement Plan.

- Track the number and nature of enquiries and complaints received.
- Seek stakeholder feedback at key milestones (post-works survey or informal conversations).
- Adjust communication methods if needed (e.g. more frequent updates or additional community briefings).

Engagement Approach per Key Stakeholder Group

Stakeholder Group	Pre-works	During works	Post-works
Local Landholders and Near Neighbours	Direct mail, emails, one-on-one meetings, fact sheet distribution, drop-in sessions, website, social media, local office	Notify stakeholders, distribute updates, offer site tours, maintain open channel for questions, demonstrate responsiveness.	Outcome reporting, follow-up, pasture trial results
First Nations (e.g. GLaWAC)	Consultation, CHMP review, GLaWAC meetings	Provide updates via email or meetings, invite GLaWAC to observe works, share monitoring and cultural heritage updates.	Joint reviews, summary report, feedback session
Local Government (EGSC & Wellington)	Council briefings, formal letters, email updates	Email briefings, issue media releases, invite representatives to site, ensure alignment with planning and community wellbeing.	Summary report, council debrief
State & Federal Departments	Formal correspondence, technical briefings, Work Plan submission	Regular progress reporting, share technical and environmental monitoring updates, respond to any compliance-related enquiries.	Final reporting, environmental data submission
Community Reference Group (CRG)	CRG meeting presentation, FAQs, slide deck	Update via CRG meetings and email, facilitate site tours, visual updates on progress, invite ongoing input.	Summary report, engagement feedback
Community & Environmental Groups	Information sessions, information sheets, email updates	Host info sessions, distribute environmental monitoring data, open channel for feedback and concerns, promote transparency.	Summary report, engagement feedback
Suppliers and Contractors	Procurement briefings, onboarding materials	Daily toolbox meetings, safety alerts, maintain signage and clear site access protocols, biosecurity protocols.	Debrief, feedback form, acknowledgments
Business & Industry Associations	Newsletter, chamber presentations, factsheet Q&A	Issue updates about procurement progress and regional benefit, briefings through local networks or chambers.	Summary report, engagement feedback
Local Media & General Public	Media releases, website updates, social media posts	Post on project website and social media, issue media updates and visuals, respond to enquiries through public hotline.	Public summary, interviews, visual media
Emergency Services (SES, CFA)	Briefing letter/email, emergency plan development	Maintain emergency contact protocols, provide updates on activity timelines, ensure access to emergency plans if needed.	Post-works report

Impacts, Mitigations, Key Messages & Actions

Potential Impact	Mitigation & Control Measures	Key Messages	Actions
Biosecurity	Clean-down stations for machinery; restricted access zones; coordination with neighbouring farm practices.	Farm hygiene is respected. Equipment is cleaned to prevent weed/soil transfer.	Notify adjacent landholders before works; confirm farm biosecurity protocols; include biosecurity info in fact sheet; respond quickly to concerns.
Cultural Heritage	CHMP will be in place; works proceed only in accordance with conditions; stop-work triggers.	Cultural heritage is protected under a formal, approved CHMP.	Maintain regular contact with GLaWAC; invite Traditional Owner monitors for site observation; provide updates on monitoring results.
Dust and Air Quality	Water carts; hydro-mulch; progressive backfill; real-time monitoring and weather-response adjustments.	Dust suppression is proactive and responsive. Controls prevent dust leaving the site.	Share monitoring summaries online; provide near-neighbour alerts in high-wind events; place signage on-site; offer site tours to show controls.
Ecology & Vegetation	Pit located in cleared pasture; ecological checks before works.	Native vegetation and habitat impacts are minimal and localised.	Publish ecological survey findings; highlight no native vegetation removal; include in community information sessions.
Land Use & Farming Productivity	Soil profiling; controlled stripping; subsoil trials; soil amelioration; pasture re-establishment and monitoring.	The purpose is to prove rehabilitation works — returning land to productive agricultural use.	Hold briefing with neighbouring farmers; provide pasture trial progress updates; share “before and after” photos.
Noise	Smaller machinery fleet; daytime hours only; no weekend processing.	Noise will be temporary, below regulatory thresholds, limited and managed.	Notify neighbours prior to works; include “when to expect noise” schedule in letters; maintain hotline for concerns.
Public Safety & Security	Fencing, locked gate, signage, controlled personnel access, inductions.	The site is secure and only authorised personnel can enter.	Clear signage at entry; include safety information in information sheets; highlight fencing and supervision in website and meetings.
Tourism & Visitor Experience	Small temporary footprint; progressive backfill; liaison with tourism operators.	The Demonstration Pit is short-term and not greatly visible from key destinations and travel routes.	Brief local tourism associations; provide visualisations/maps.
Traffic & Access	Controlled entry; limited vehicles; signage and road safety protocols.	Local roads will not experience heavy haulage — only light controlled access.	Notify neighbours of vehicle movements; share access route map; coordinate with council if required.
Visual Amenity	Small footprint; temporary works; progressive backfill and contouring; pasture restoration.	The pit is temporary and rehabilitated to blend into farmland.	Provide photo simulations; share rehabilitation progress photos; include visuals in social updates.

Potential Impact	Mitigation & Control Measures	Key Messages	Actions
Water (Surface & Groundwater)	Fully bunded work area; stormwater controls; groundwater well below pit depth; monitoring bores.	No groundwater is intercepted; no offsite discharge, water protection is closely monitored and verified.	Publish monitoring results; provide updates in CRG; include groundwater explanation graphics in information sheets.
Wildlife & Livestock Safety	Fencing and controlled access; fauna spotter checks; monitored pasture recovery before grazing returns.	Livestock and wildlife are protected; the land will be safely returned to grazing.	Notify graziers before works; confirm stock movement plans; share rehabilitation milestones before re-grazing.

Additional Information & Resources

The following Additional Information & Resources are available on our website:

- [Frequently Asked Questions](#)