

# Community Reference Group

**MEETING #2**

**13 June 2025**

# Today's Agenda

## Meeting Agenda

	<b>Duration</b>	<b>Time</b>	<b>Lead</b>
		<i>Starting Time &gt;</i>	
Welcome, Introductions & Membership	0:30	13:00	
		13:30	Chair
Project Progress & Key Developments	0:40	14:10	Michelle
Mine Design Update	0:40	14:50	Stefan
BREAK	0:15	15:05	
Mine Rehabilitation & Demonstration Pit	0:30	15:35	Loretta
Community & Stakeholder Engagement	0:60	16:35	Ryan
+ Benefit Sharing			
Meeting Wrap Up & Next Steps	0:25	17:00	Chair

# Welcome, Introductions & Membership



**John Mitchell**  
CRG Chairperson

Gippsland Critical Minerals acknowledges the Gunaikurnai People as the Traditional Custodians of Country that encompasses the proposed Fingerboards Project area.

We pay our respects to their Elders past and present and recognise their enduring connection to the land, waters, culture, and community.

# Today's Presenters

## Project Progress & Key Developments



**Michelle Wood**  
CEO

## Mine Design Update



**Stefan Wolmarans**  
Project Director - Technical

## Mine Rehabilitation & Demonstration Pit



**Loretta Fallaw**  
Project Lead -  
Environmental

## Community & Stakeholder Engagement Update



**Ryan Leslie**  
Project Director – Community &  
Stakeholder Engagement

# Role & Composition of the CRG

The Community Reference Group (CRG) is a key advisory body designed to facilitate engagement between our project team and the local community.

The CRG provides feedback and input to guide our project decisions, ensuring community perspectives are considered throughout the process.

The CRG:

- currently consists of **12 members** appointed for a two-year term.
- is facilitated by an Independent Chairperson
- attended by Project Representatives, and Specialists who are invited as needed.

**We'd like 3 more members... and we'd like your help.**

# Project Progress & Key Developments



**Michelle Wood**  
CEO

# Fingerboards – Global & Local Significance

## Contribution to Global Supply

- Supports AUKUS & Future Made in Australia Strategy
- Supports 10 GW of wind energy or 5M homes
- Essential for defence technologies (e.g. satellites, jet engines)

## Economic & Regional Benefits

- \$90M annual contribution to Victoria's economy
- ~300 long-term jobs over the life of the mine
- \$140M in royalties for Victoria's budget

CRITICAL MINERAL	% OF GLOBAL SUPPLY	KEY USES
Zircon	7.2%	Ceramics, dental products such as implants and crowns, aircraft and defence components, electronics and specialist paints and varnishes.
Light Rare Earths (Neodymium and Praseodymium)	1.4%	Ultra-strong permanent magnets with uses in wind turbines, electric vehicle, drones, robots, consumer electronics and industrial applications.
Heavy Rare Earths (Dysprosium and Terbium)	7.1%	Ensures magnets stay effective at elevated temperatures and under exposure to strong demagnetization forces.

The Fingerboards Project's Contribution to the Global Supply  
Source: Adamas Intelligence

# Positive Momentum

---

## Recent **Victorian Government Approvals:**

- Goschen Rare Earth Project (Swan Hill)
- Avonbank Mineral Sands Project (Horsham)
- Fosterville and Marinus Link projects

## **Federal Support** for major energy and mining projects

- e.g. Woodside's North-West Shelf extension (approved May 2025)

Clear government trend: **greater urgency** and **support** for responsibly resource projects

## **Fingerboards** will be approved if we can:

- Minimise impact from the outset
- Respond to 2021 feedback
- Go above and beyond mitigation: protection, preservation & rehabilitation
- Engage the community and deliver lasting benefits

**Since GCM's first quarterly milestone report was submitted, the government has confirmed we are on track across all areas.**

# Progress on Milestones

This dashboard shows progress toward milestones across the three years of the current RL2026 license period. Year 3 of the current license period concludes on 11 August 2025.

## YEAR 3 (CURRENT YEAR)

Milestones	Status
#23 Rescope – boundaries and buffer changes	■
#24 Commence Concept Definition Study (CDS or FS)	■
#25 Complete assay samples from Fingerboards 2022 infill drilling	■
#26 Community Engagement Plan	■
#27 Key Stakeholder Policies and Procedures	■
#28 Community Benefits	■
#29 Community Sentiment	■
#30 Assess Stakeholder Expectations and Priorities	■
#31 Inform Community	■
#32 Advance access agreements	■
#33 Environmental Baseline Monitoring	■
#34 Climate Modelling	■
#35 Rehabilitation Trials	■
#36 Impact Assessment Studies – Commenced	■

**Year 3 Expenditure - \$4,000,000**



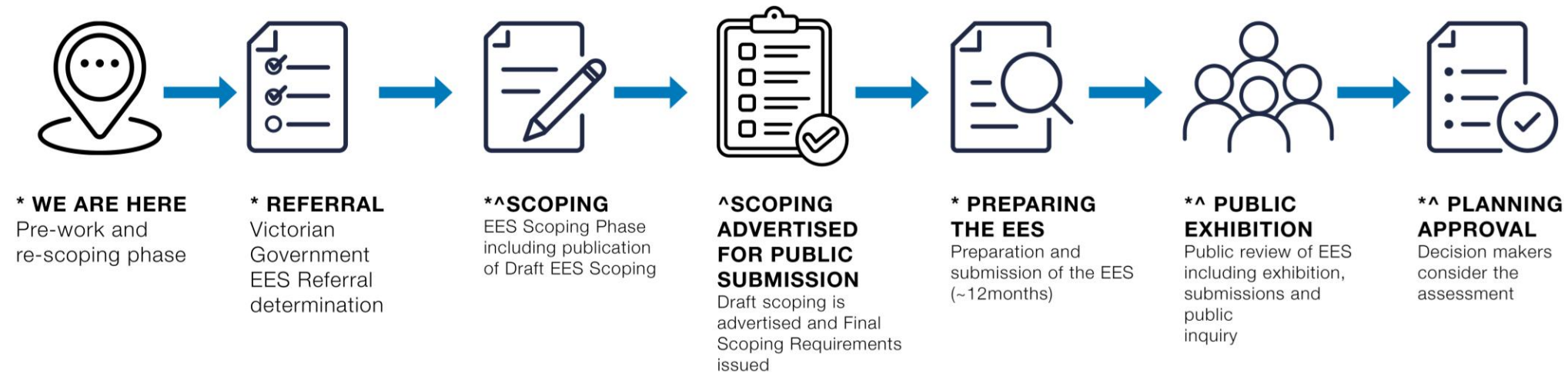
## YEAR 4

Milestones	Status
#37 Continue Concept Definition Study	■
#38 Community Engagement	■
#39 Community Benefits	■
#40 First Nations	■
#41 Community Sentiment	■
#42 Assess Stakeholder Expectations & Priorities	■
#43 Advance Access Agreements	■
#44 Environmental Baseline Monitoring	■
#45 Climate Modelling	■
#46 Rehabilitation Trials	■
#47 Impact Assessment Studies – Commenced/ Continued	■
#48 EES Decision on new referral	■
#49 Water Sources & Supply	■

■ On Track ■ Attention ■ Complete ■ Delayed ■ Not Started

# Approvals timeline

## Environmental Effects Statement Process



### \* Ongoing consultation opportunities

A planned engagement program delivered by Gippsland Critical Minerals will provide ongoing opportunities for stakeholders to access information and share feedback that informs project design and development. The proposed program is included in this Plan.

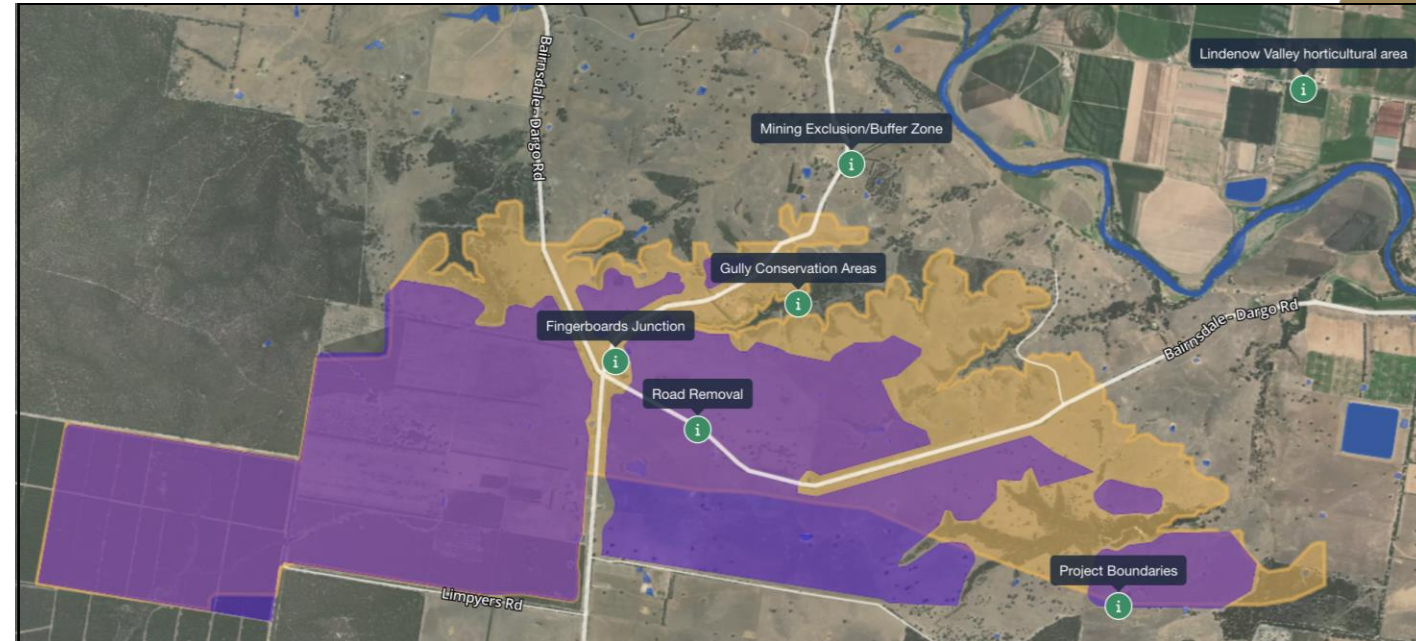
### ^ Formal consultation opportunities

Members of the public can also participate in the EES process by providing written comments on the draft scoping requirements and exhibited EES.

# Redefined Mining Area

As part of our rescoping process, GCM has refined the project footprint to reduce environmental and community impact.

- **27%** reduction in mining and processing plant area
- Significantly reduced impact on:
  - Native vegetation
  - Local road infrastructure (**80%** reduction in road diversions)
- **22,800 hectares** excluded from mining under Government-mandated Section 7 exclusion zone — limits GCM activity to the retention licence area only
- Northern section removed in response to community feedback, Southern section added to host the new separation plant
- New plant location enables bulk product transport via private roads to a proposed rail siding at Fernbank



- 2021 mining area and proposed processing plant location
- 2025 proposed mining area and processing plant location

**What's Next:** Development of a detailed mining schedule – identifying what, when, and where we mine, including panel sizing.

# Environmental and Technical Studies

<b>Ecology</b>	Assessment of ecological values and sensitive areas
<b>Flora and Fauna</b>	Species surveys, habitat assessments, biodiversity significance
<b>Cultural Heritage</b>	Studies of Aboriginal and historic cultural heritage
<b>Visual and Landscape</b>	Assessment of visual impacts and landscape character
<b>Land Use and Planning</b>	Compatibility with current and future land uses
<b>Traffic and Transport</b>	Impacts of construction and operations on road networks
<b>Economic Development</b>	Economic contribution and regional development benefits
<b>Social Impact</b>	Community wellbeing, population, and amenity impacts
<b>Human Health</b>	Potential effects on public health from project activities
<b>Agriculture and Horticulture</b>	Assessment of potential impacts on local agriculture and horticulture
<b>Geotechnical Conditions</b>	Subsurface conditions relevant to project safety and design
<b>Soils</b>	Soil characteristics, erosion potential, and handling requirements
<b>Rehabilitation</b>	Panning for progressive rehabilitation and final landform restoration

# Baseline Monitoring Studies

To inform the specific technical studies within the Environmental Impact Assessment, GCM has commenced a comprehensive baseline monitoring program.

This monitoring is designed to establish a clear understanding of existing environmental conditions across the project area and its surrounds.

<b>Weather</b>	Ongoing climate and atmospheric data collection
<b>Air Quality and Dust</b>	Includes particulate monitoring and rainwater tank sampling
<b>Surface Water</b>	Monitoring of flow rates and water quality in local waterways
<b>Groundwater</b>	Includes both regional and site-specific (re-supply) monitoring
<b>Noise</b>	Existing noise levels to inform modelling and future management of operational impacts
<b>Radiation</b>	Background radiation levels at and around the project site

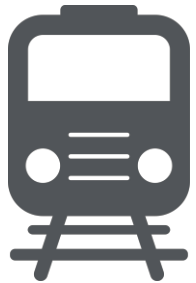
# Demonstration Pit

---

- Workplans for a demonstration pit have been finalised, allowing us to test and validate our proposed approaches to key operational areas:
  - Dust control (e.g. in-pit dozer push, dust suppressants)
  - Water management (reuse systems, runoff control)
  - Tailings handling
  - Progressive rehabilitation trials
- The demonstration pit is scheduled to commence in **January 2026**
- A critical step to refine our methods before full-scale operations
- Loretta to provide more detail shortly

# Project Opportunities

As the project progresses, we're starting to see exciting opportunities emerge for the broader East Gippsland community – while also working through important challenges.



**Freight train  
potential**



**National Security &  
Onshore Processing**



**Supply Chain  
Benefits**



**Job & Education  
mapping**

As with any major development, a number of key challenges are still being addressed:

## 1. Communication with Community

- Addressing key concerns on dust and radiation

## 2. Pathway to Net zero

- GCM is committed to delivering a **net-zero emissions facility**
- Further technical planning required to define **how** this will be achieved

## 3. Water Source Certainty

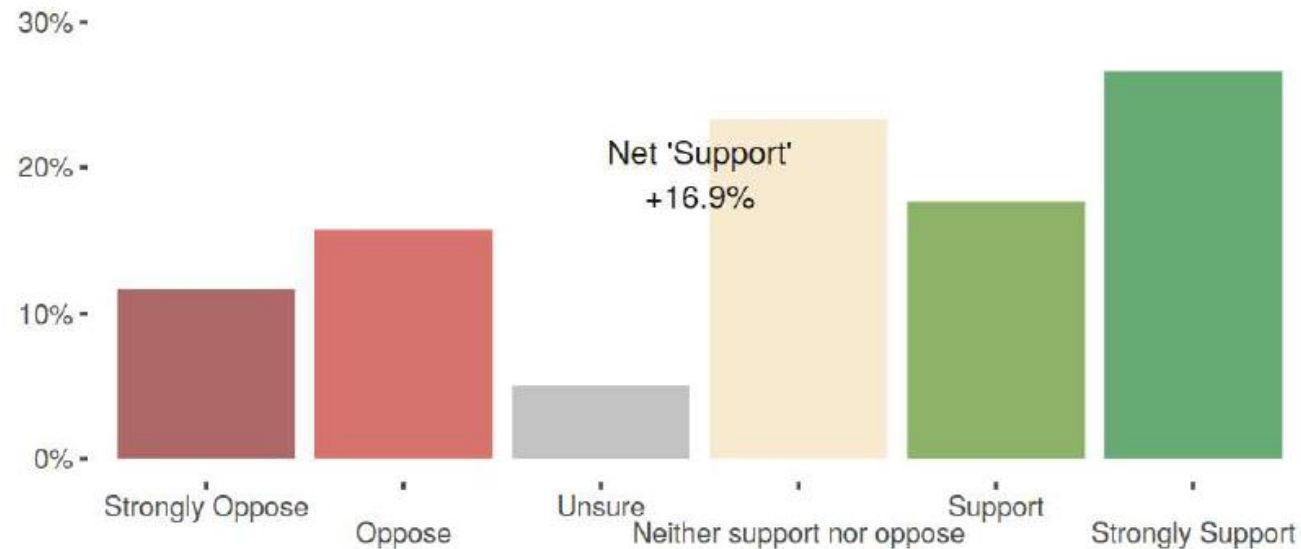
- **Groundwater exploration program** led by GHD is currently underway
- Aims to determine the depth and viability of the deep aquifer
- Will assess potential **impacts of water extraction** from proposed bore field

We're approaching each challenge with care and collaboration, working closely with experts and stakeholders to find sustainable, community-aligned solutions.

# Sentiment Survey

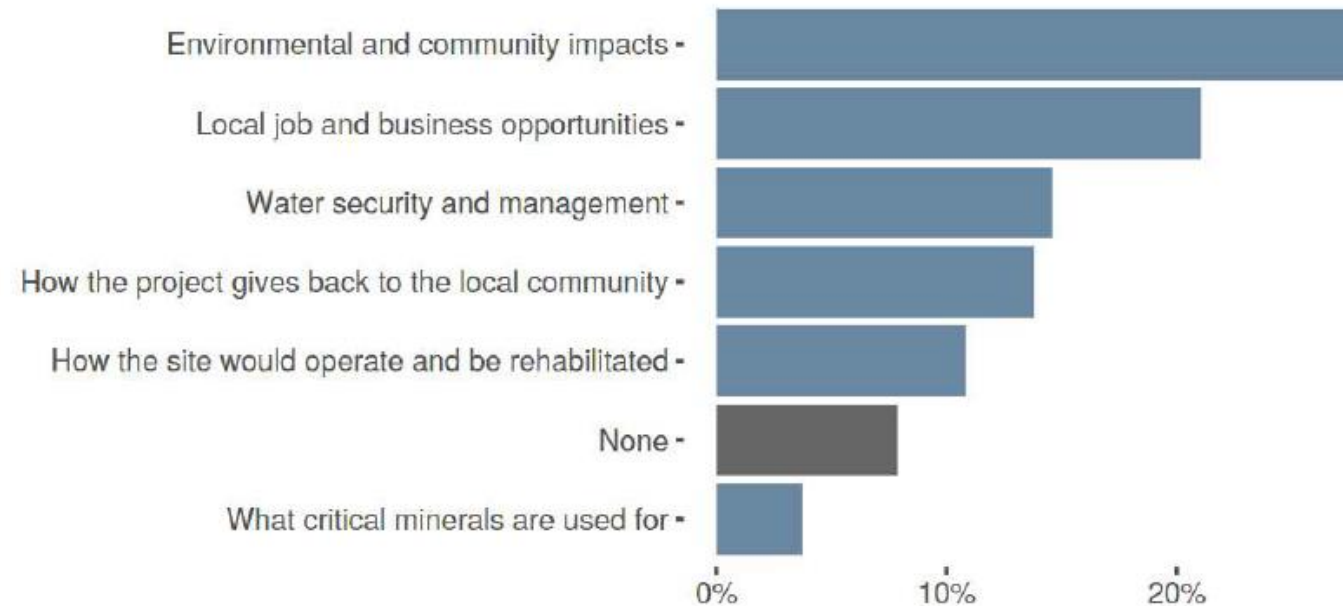
## 3.12 Overall Project Support

The Fingerboards project would extract critical minerals that are used to produce technology devices like smart phones, and components for batteries, electric vehicles, wind turbines and other sources of renewable energy. It is estimated that the project would have a life of around 22 years. Overall, do you support or oppose the establishment of a Fingerboards Critical Minerals project?



## 3.14 Determining Support

Of the following, what is most important in determining whether you support or oppose the project?



**Thank you.**  
**Any final questions?**

# Mine Design Update



**Stefan Wolmarans**  
Project Director - Technical

# Mine Design

- Resource within the environmentally constrained area has been assessed to identify the area that can be economically mined – it is unconstrained by the physical mine design constraints
  - Depth to ore, width of working faces, geotechnical risk offsets, equipment access dimensions.
- Mine designs undertaken to define the future mining areas.



# Mine Design

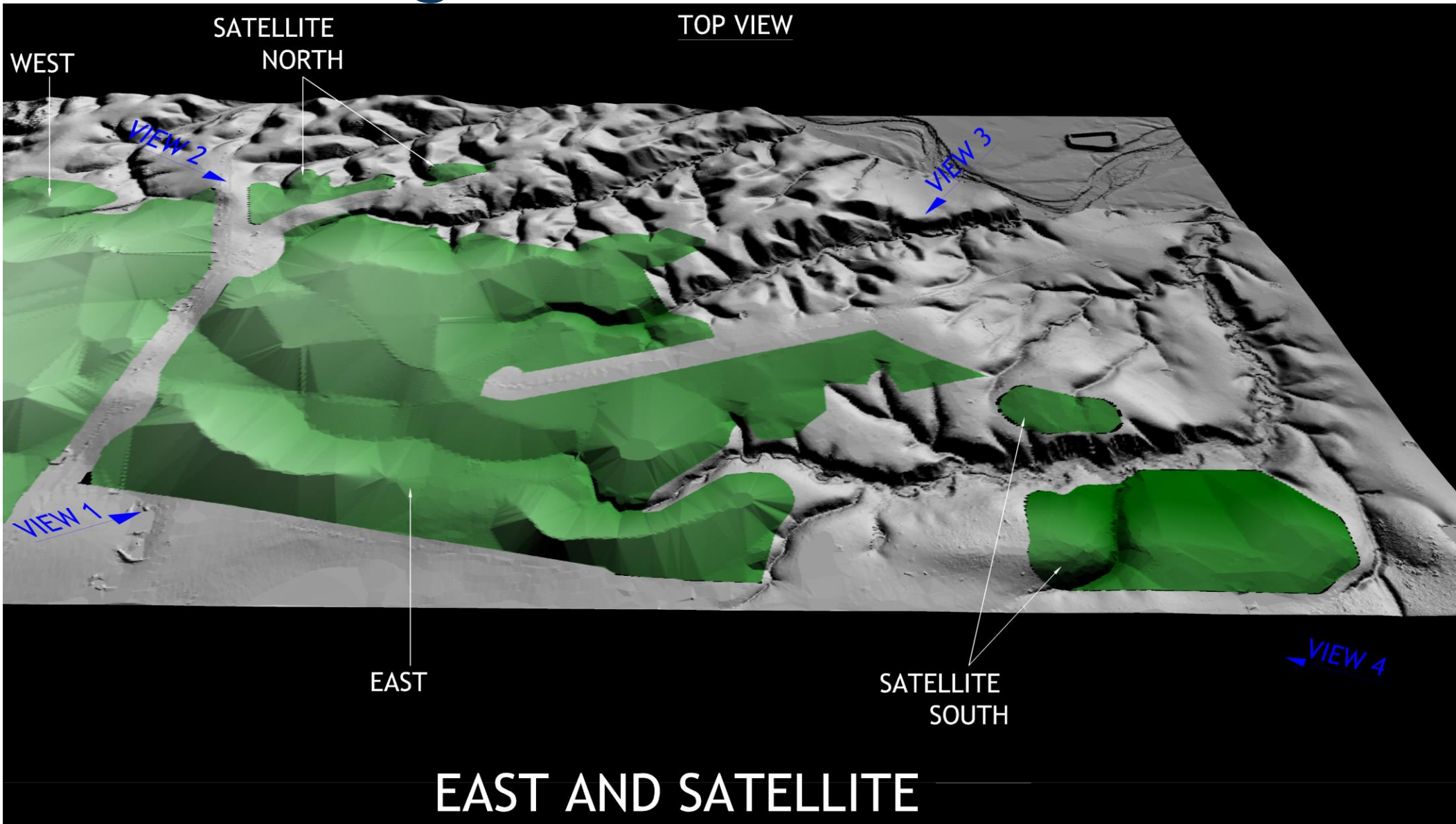
- Mine areas are smaller than the mineable areas
  - Some areas too narrow to be practically mined due to depth
  - Proximity to gully areas
  - Equipment access requirements
  - Two main areas (east and west) and four satellite areas



# Final Landform Design

- We start from the finished landform to identify material movement during the detail design due to the natural swell of the material.
- Rehandle must be minimised to ensure rapid rehabilitation
- Maintain the natural drainage paths and catchments after completion of mining

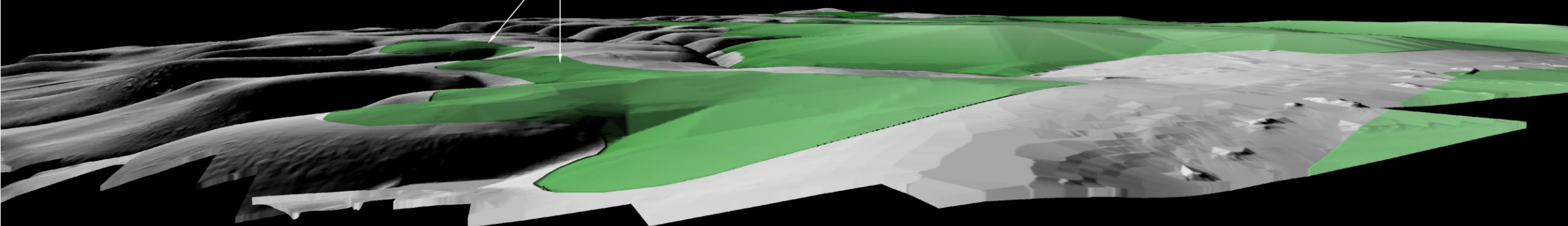
# East Mining Area



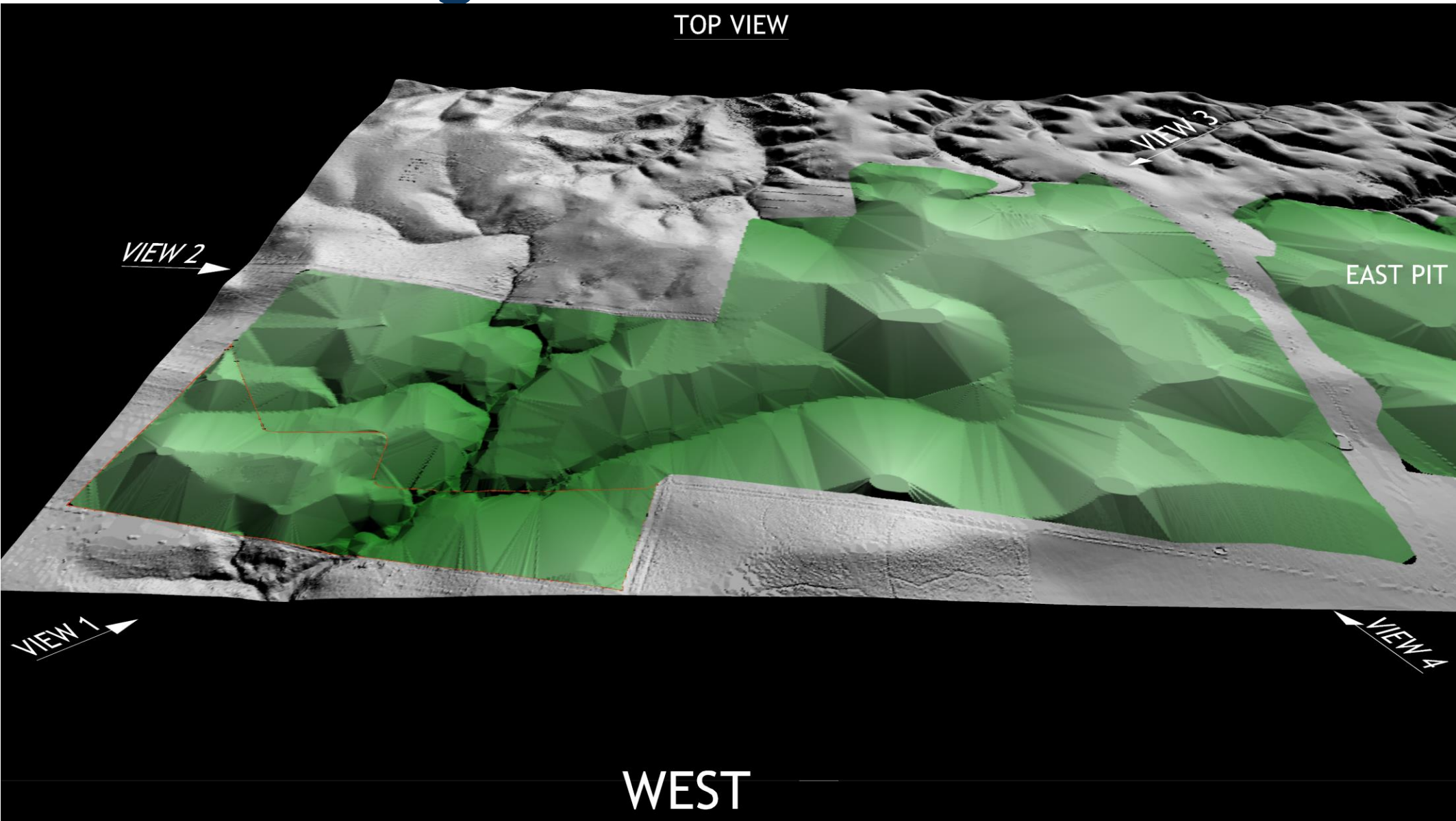
# East Mining – View from NW

VIEW 2

SATELLITE  
NORTH

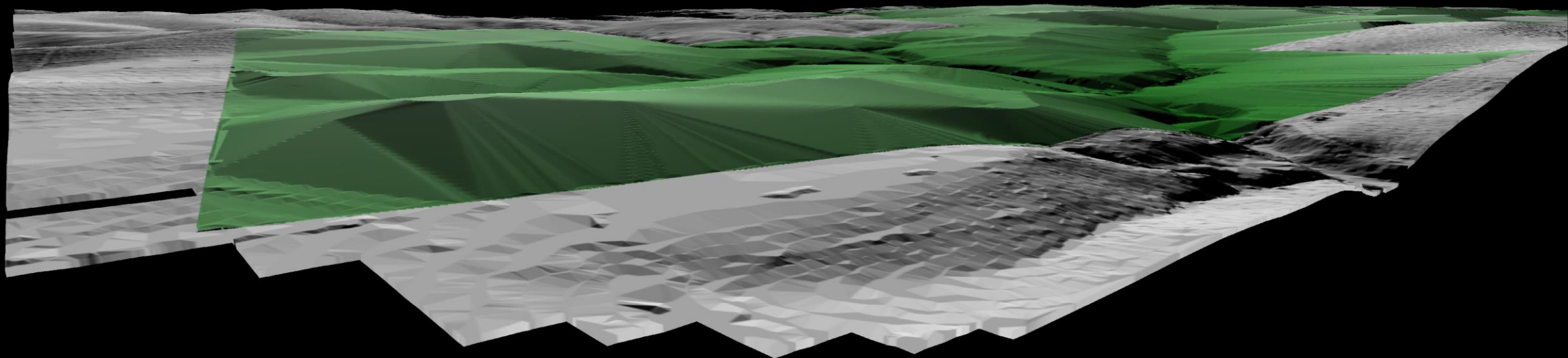


# West Mining Area



# West Mining – View from SW

VIEW 1



# Mine Design – Next Steps

- Defining the sequence of mining - how do we move through the mining areas and undertake the detail mine designs – strip sequence, tailings deposition sequence and rehabilitation sequence.  
Work currently in progress
- Ongoing test against noise and dust modelling to identify areas of refinement.



**Thank you.**  
**Any final questions?**

# Mine Rehabilitation & Demonstration Pit



**Loretta Fallaw**  
Project Lead – Environmental

# Mining & Rehabilitation Demonstration Pit (MRDP)

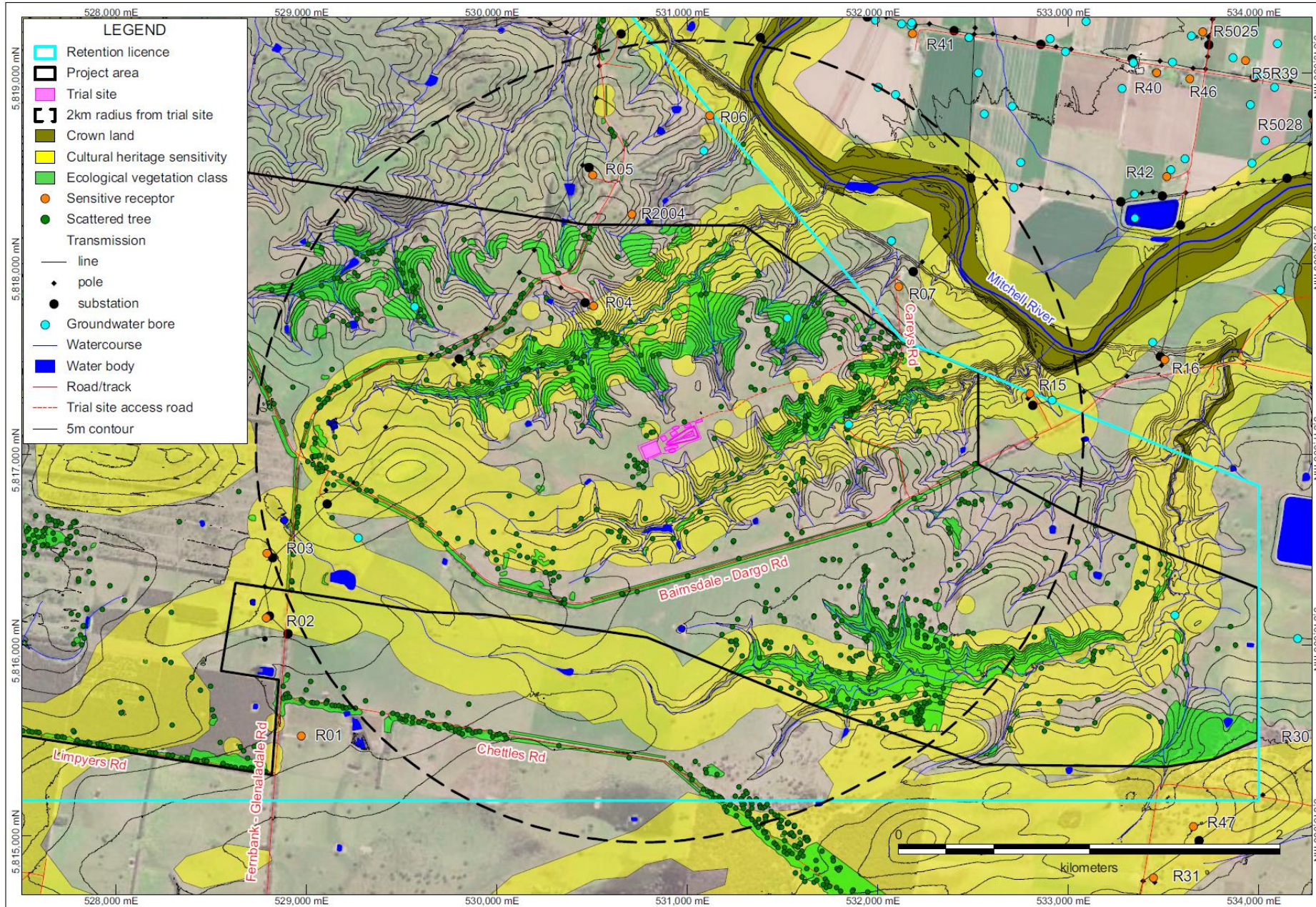
## WHY?

- The MRDP has the primary purpose of undertaking smaller-scale ore recovery, void backfill and rehabilitation to replicate the proposed full-scale operational processes
- Enable the rehabilitation trial required under Milestones 35, 46, 61 and 75 of RL2026.
- The planned works will create opportunities to confirm technical aspects that support the detailed design and definitive feasibility study for the Fingerboards project.

## WHAT?

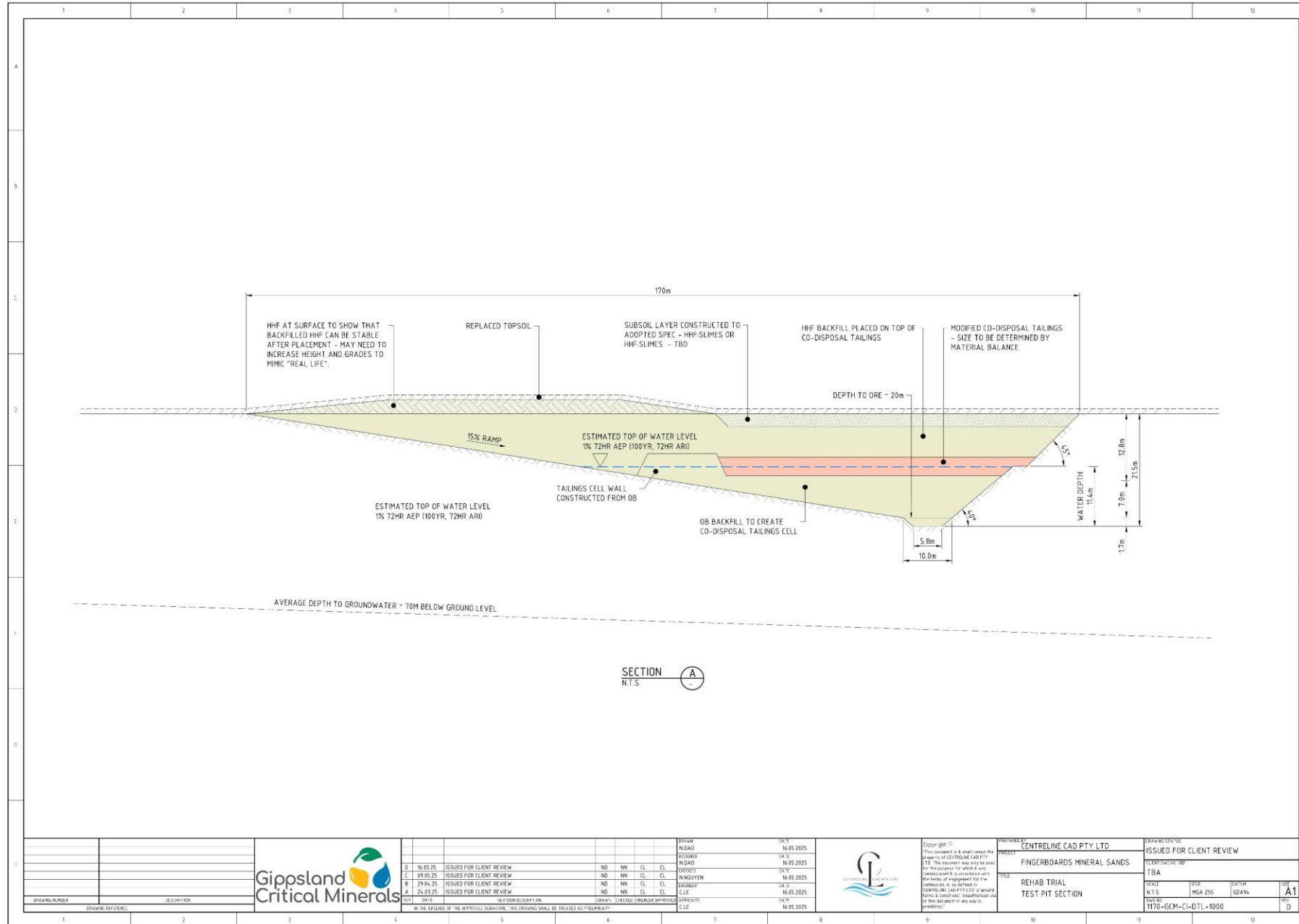
- Key features of the exploration work plan are:
  - A demonstration pit (approx. 0.6 hectares)
  - Topsoil and overburden stockpiles.
  - Office, laydown area, carpark, ablutions and stores infrastructure.
  - Use of existing internal farm track for access.
  - Raw water storage dam.
  - Process water tank
  - No significant increase in local traffic.
  - All activity located on freehold owned land

# Mining & Rehabilitation Demonstration Pit (MRDP)





# Mining & Rehabilitation Demonstration Pit (MRDP)



# Key Processes

- **Clearing of grass** vegetation and **stripping of topsoil** to designated topsoil windrows for preservation;
- **Excavation** of overburden to a stockpile;
- Recovery of **ore** to a stockpile;
- On site **data gathering** including:
  - Completing a small representation of the operational life cycle of ore recovery, tailings deposition, void backfill and surface rehabilitation.
  - In situ bulk density test work for overburden, mineralisation and within the floor of the excavation;
  - Performing permeability testing of various lithologies; and
  - Evaluating the excavability and trafficability of the various lithologies using the mobile plant fleet.
- Small scale (dismountable) **processing** facility to broadly recover the heavy mineral but primarily to produce a typical wet backfill reflective of a larger operation;
- **Backfilling** the excavation with recovered overburden which includes the placement of subsoils and topsoils to enable rehabilitation with pasture. This includes trialling of various soil modification variables.
- **Collection** of ambient noise and air quality (particulate) **data** to allow further calibration of noise and air quality modelling completed as part of the Fingerboards EES;
- **Collection** of surface water (runoff) quality **data** to evaluate water quality during the establishment phase of the pasture as part of the Fingerboards EES;
- **Collection** of soil quality (nutrients and soil chemistry) **data** during the establishment phase and subsequent growing seasons phase of the pasture vegetation;
- **Trialling of revegetation** procedures for land proposed to be used for grazing purposes.

**Thank you.**  
**Any final questions?**

# Community & Stakeholder Engagement



**Ryan Leslie**

Project Director – Community & Stakeholder Engagement

# What are we hearing?

## Interests

Cultural Heritage Protection

Economic Development & Job Creation

Environmental Sustainability

Local Procurement & Workforce Development

Transparency & Inclusion in Decision-Making

East Gippsland's Access to the Latrobe Aquifer

## Benefit Sharing Initiatives

## Concerns

Environmental Degradation

Impact on Biodiversity

Dust Generation & Air Quality

Water Management & Quality

Community Health

Amenity & Lifestyle Impact

Impact on Agriculture & Horticulture

## Opportunities

First Nations Partnerships

Collaborative Planning for Legacy Assets

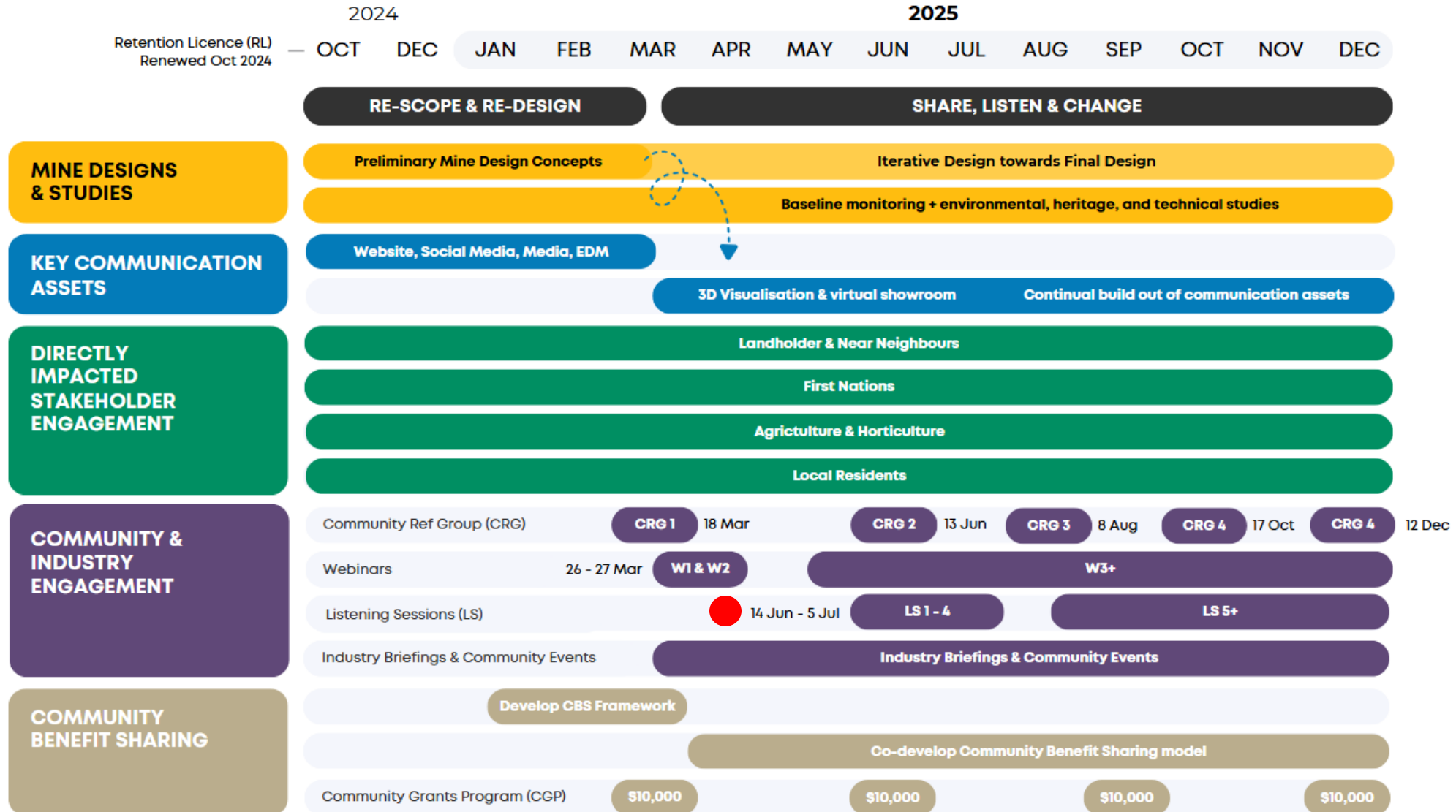
Enhanced Environmental Monitoring & Reporting

Skills Development and Training Partnerships

Local Procurement & Workforce Development

Fernbank Rail Siding (baseload):  
Unlocking East Gippsland's Rail Freight Potential

# Engagement Roadmap



# June-July Listen & Learn Drop-ins

Commencing mid-June, the GCM team will be on the road visiting town centres across East Gippsland and Wellington Shire to provide more information, listen to feedback, and answer questions.

## **Saturday, 14 June – The Hub Bairnsdale**

27 Dalmahoy St, Bairnsdale 9:00am to noon

## **Saturday, 21 June – Linenow General Store**

149 Main Rd, Lindenow from 9:00am to noon

## **Saturday, 28 June – Port of Sale Function Gathering Area**

154 Princess Hwy Service Rd, Sale from 10.30am to 2.00pm

## **Saturday, 5 July – Segue Community Hub & Arts Cafe**

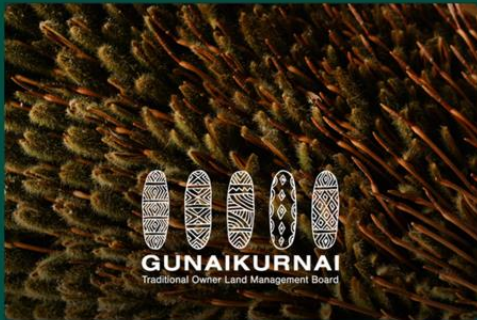
166 Tyers St, Stratford from 10.00am to 2.00pm

**Let's  
talk  
benefits**

# Benefit Sharing Framework

## FOCUS AREA 1

Cultural Heritage  
Protection and First  
Nations Empowerment



Invite and support Gunaikurnai Traditional Owners in the protection, revitalisation and celebration of cultural heritage and enable economic self-determination for Aboriginal communities.

## FOCUS AREA 2

Local Employment,  
Procurement, and  
Workforce Development



Build a skilled workforce and maximise local economic participation.

## FOCUS AREA 3

Investment in Local  
Infrastructure and Legacy  
Assets



Create enduring regional value beyond the mine's operational life by delivering infrastructure co-benefits for public and industry use and regional capacity building.

## FOCUS AREA 4

Community  
Strengthening and  
Liveability



Support initiatives that enhance community connectedness, pride, wellbeing, and lifestyle.

## Local Employment, Procurement & Workforce Development



Build a skilled workforce and maximise local economic participation.

### Our initial thinking...

#### Buy Local Procurement Plan

As a key buyer in the region, we will commit to buying locally and to preferencing and developing local business as our key supply chain providers

#### Local Workforce Development Plan

We will co-develop solutions and collaborate with:

- Local employers and industry associations
- Local education and training organisations (secondary schools, TAFE Gippsland, Federation University)
- Local Shire Councils and relevant Victorian and Australian Government departments
- Industry Capability Network

#### Industry Collaboration

### What else?

## Investment in Local Infrastructure and Legacy Assets



Create enduring regional value beyond the mine's operational life by delivering infrastructure co-benefits for public and industry use and regional capacity building.

Water Supply

Water Storage

Roads

Power Supply

Rail Siding

Ecological Restoration

What are some high-value tangible and intangible legacy opportunities?

FOCUS AREA 4

## Community Strengthening and Liveability



Support initiatives that enhance community connectedness, pride, wellbeing, and lifestyle.

### Our initial thinking...

#### Community Grants Program

The program supports community initiatives that enhance the quality of life, heritage, recreation and cultural opportunities, and provide long lasting benefits to the local community. 5 x \$2,000 grants / qtr.

#### Community Partnerships

Multi-year funding and support to values-match NFP organisations.

#### Community Sponsorships

Awards, events, programs.

What's the best way to support our community?  
How do we best decide?

**Thank you.**  
**Any final questions?**

# Meeting Wrap Up & Next Steps



**John Mitchell**  
CRG Chairperson