

# Mining & Rehabilitation Demonstration Pit

The Mining and Rehabilitation Demonstration Pit (MRDP) is a reduced-scale trial designed to test how land can be effectively rehabilitated under real world conditions. It forms part of GCM's reporting and delivery obligations under retention licence RL2026, which requires us to undertake large-scale rehabilitation trials.

## Pit Size

### 170 metres long

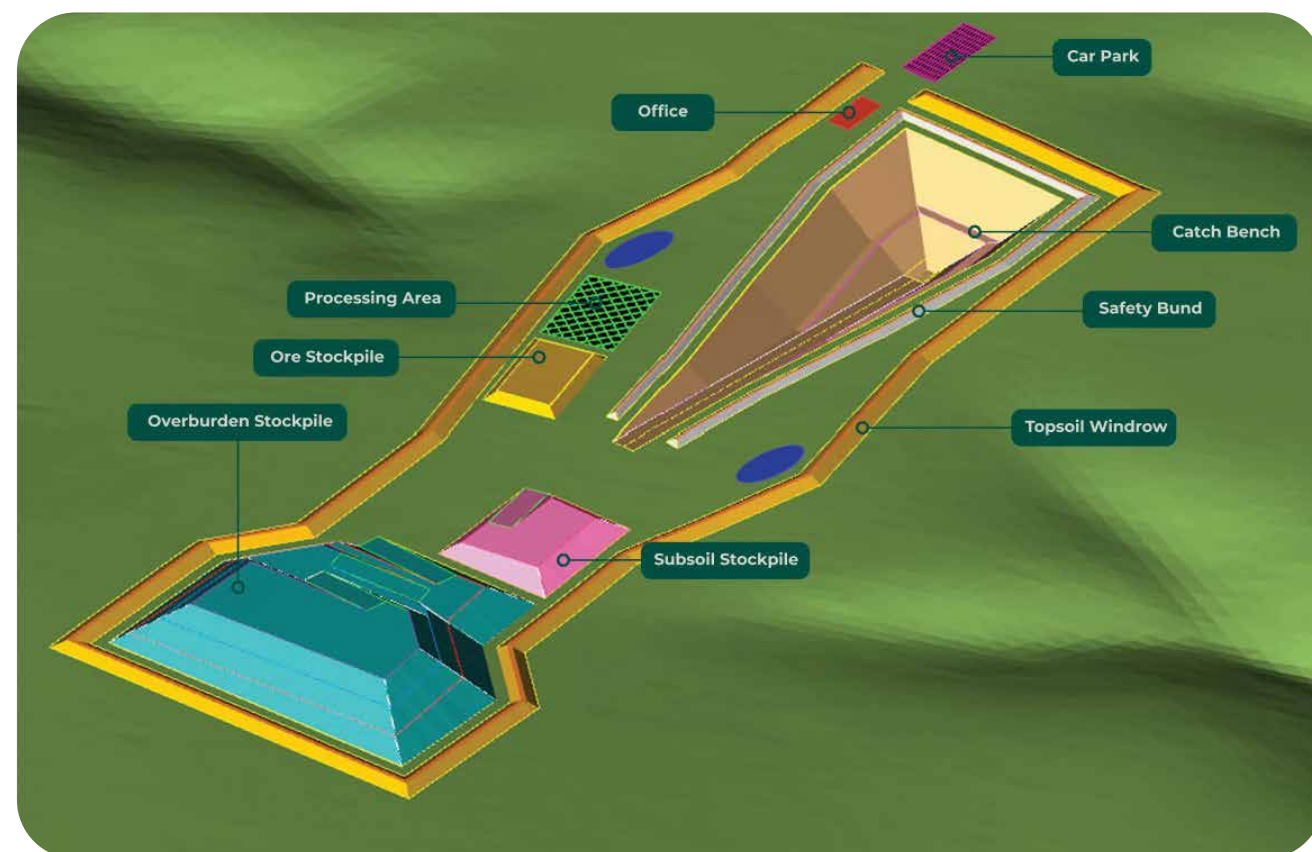
(about the length of the MCG playing field)

### 55 metres wide

(about the length of one Olympic swimming pool)

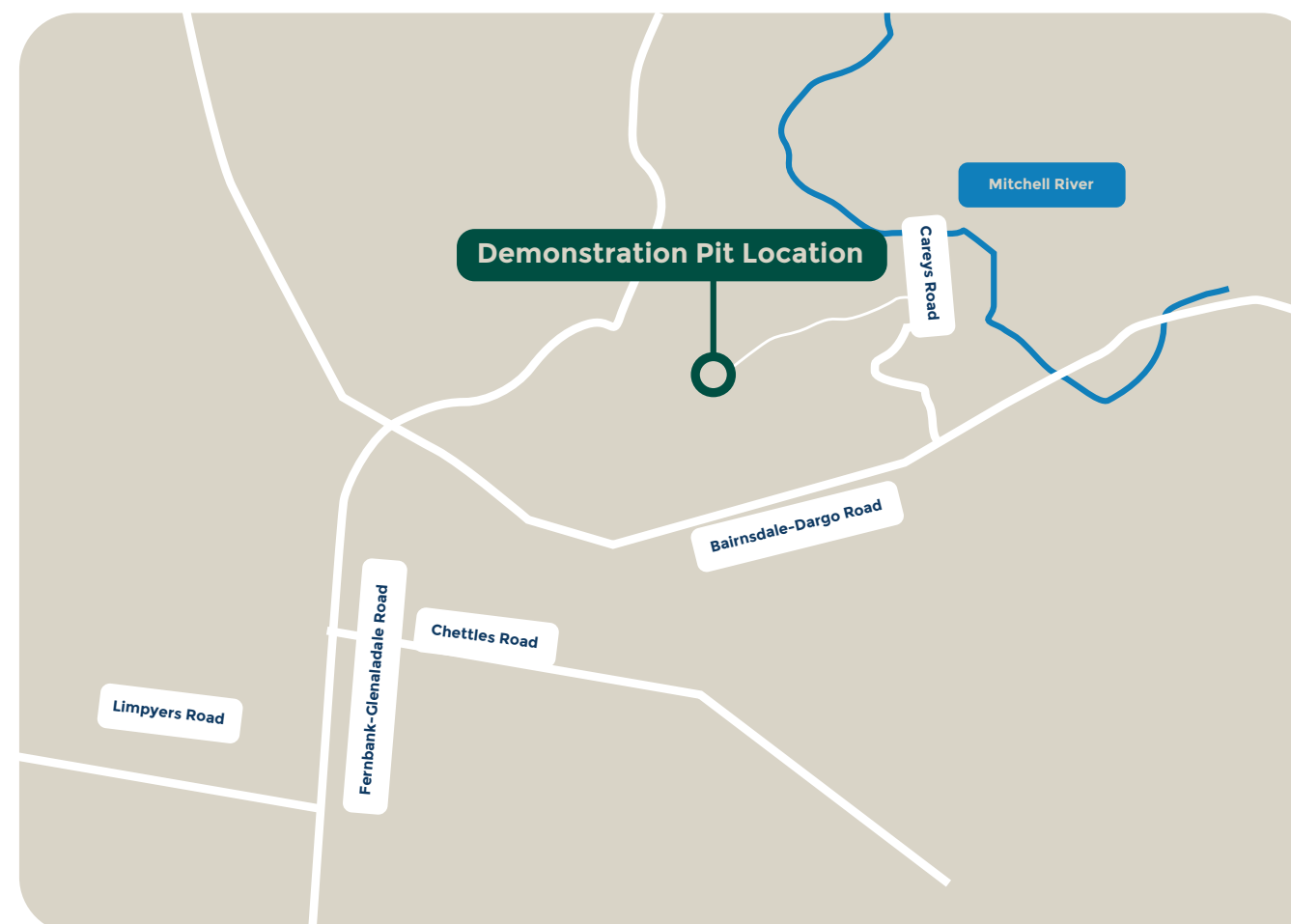
### 22 metres deep

(Seven storeys deep)



## Location

The MRDP is located on the eastern side of the RL2026 area. This site was chosen because its geology and soil conditions closely match those expected across the wider project area.



## What will we test and trial with the MRDP:

- Rehabilitation practices including species selection to test, trial and optimise vegetation growth.
- Geological information such as soil permeability, water retention, density and moisture content.
- New tailings design including water recovery techniques.
- Groundwater quality and seepage rates.
- Soil including soil strength, bearing capacity, and soil chemistry.
- Monitoring of environmental parameters including dust, air quality, noise, radiation and water quality that can be input into the modelling for the full-scale project.

Learn more on our website  
[gippslandcriticalminerals.com](https://gippslandcriticalminerals.com)

# Construction of the MRDP

## Indicative Timeline

*Earthworks limited to daylight hours  
(7am-6pm Mon-Fri, 7am-1pm Sat).*



## Environmental protections

**Biosecurity:** Clean-down stations for machinery, restricted access zones and coordination with neighbouring farms.

**Dust and air quality:** Use of a water cart, hydro-mulch, and progressive backfilling. Where necessary, we will pause works during high wind conditions.

**Ecology and vegetation:** Works occur in cleared pasture, with ecological checks completed prior to any excavation.

**Land use and farming productivity:** Soil profiling, controlled stripping, subsoil trials, soil amelioration and pasture reestablishment with ongoing monitoring.

**Water (surface & groundwater):** Fully bunded work area with underdrainage to collect water, monitoring bores, and groundwater located well below the pit depth.

**Wildlife and livestock safety:** Fencing and controlled access to the site.

**Noise:** Daytime-only operations with ongoing noise monitoring.

**Cultural heritage:** Works proceed only in accordance with conditions of a Cultural Heritage Management Plan (CHMP).

## Jobs and procurement

We are prioritising East Gippsland people and businesses with more than \$1 million in procurement contracts already delivered - supporting local jobs, suppliers and contractors across construction, civil works and site operations.

This ensures the benefits of the Fingerboards Project flow to East Gippslanders first.

If you're interested in opportunities with the MRDP or the Fingerboards Project, visit [www.gippslandcriticalminerals.com/jobs-suppliers/](http://www.gippslandcriticalminerals.com/jobs-suppliers/)

## Want to know more?

We'll be offering opportunities for community members to visit the site.

Our East Gippsland Community and Stakeholder Lead, Mick Harrington, is available if you'd like to get in touch: [Mharrington@gippslandcriticalminerals.com](mailto:Mharrington@gippslandcriticalminerals.com)

You can also scan the QR code to register for updates.

